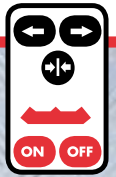




ORIGINAL NOOTEBOOM PARTS

# Wireless STEERING CONTROL UNIT



## FOR ALL NOOTEBOOM HYDRAULICALLY STEERED SEMI-TRAILERS\*

**Nootboom, in close cooperation with their supplier, has developed the Wireless Steering Control unit specifically for the manual steering of hydraulically steered semi-trailers.**

This latest Wireless Steering Control uses the 868 MHz frequency. This frequency is used exclusively by professional providers, which makes interference, and consequently disturbance, extremely unlikely. The Nootboom WSC uses digital technology, which results in an extremely stable reach within a radius of approx. 350 metres around the trailer. Elements that cause interference such as fog, moisture, metal and power pylons have no influence on the operation of the WSC. The WSC has undergone extensive tests in the field in all kinds of weather and offers maximum reliability and ease of operation. This means that compared with its predecessor this manual steering method is much improved.

### **Integrated axle alignment**

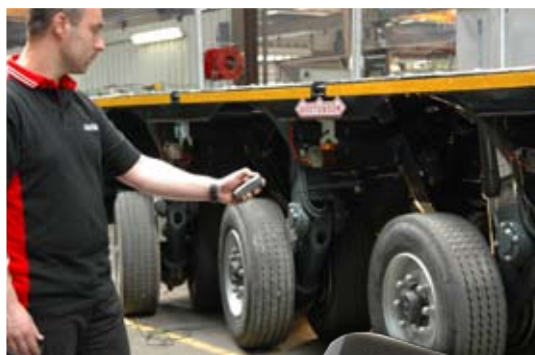
The Nootboom Wireless Steering Control unit is virtually the only remote control system with integrated axle alignment of the entire vehicle combination. After using the wireless steering the entire combination can be put in the straight-ahead position again with the push of a button: it's easy, quick and safe. This important - and vital - function is often missing on the (wireless) manual steering units of other trailer makes. A properly aligned combination contributes towards, among other things, increased transport safety and reduced tyre wear.

*\*) Only for vehicles with the ASA-2 steering system*



# SPECIFICATIONS

**Wireless**  
STEERING CONTROL UNIT



## The handheld transmitter

The compact and attractive design and the functional rubber sides make this handset extremely comfortable to hold and it is small enough to easily fit in your trouser pocket. With the handset of the WSC you feel completely in control, due to the extremely fast response time of less than 0.1 second and the soft click of the buttons. The chip-proof and impact-resistant handset with belt clip is designed for intensive use, even in the most extreme conditions. The handset is equipped with a standard 9V block battery with a long life (1.5 to 2 years). The handset also has a battery-low indication. The transmitter will automatically switch off if it is not used for approx. 4 minutes or used continuously for longer than 5 minutes.



## The receiver

Due to the compact, fully die-cast housing, the receiver is 100% watertight (IP68), extremely tough and reliable. The housing also absorbs and buffers any vibrations. The powerful and compact receiver comes with a cable with moulded plug, a bracket and padlock and is extremely easy to fit on the vehicle.

